

RADA VR145 VANDAL RESISTANT SHOWER FITTING



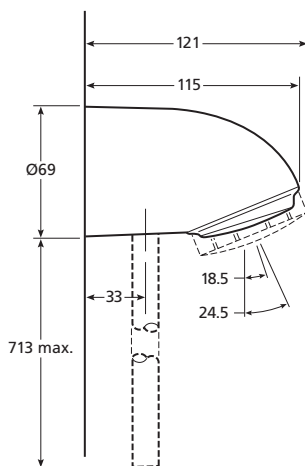
- WRAS Approved
- KIWA Approved
- Vandal resistant shower head
- Durable polished chrome finish
- 15 mm rising straight push-fit pipe connection
- Optional 'Rada Riser Pipe' suitable
- Fitted with single spray pattern plate with adjustable angle of discharge
- Fitted with 9 litres/minute flow regulator (6 litre regulator available)



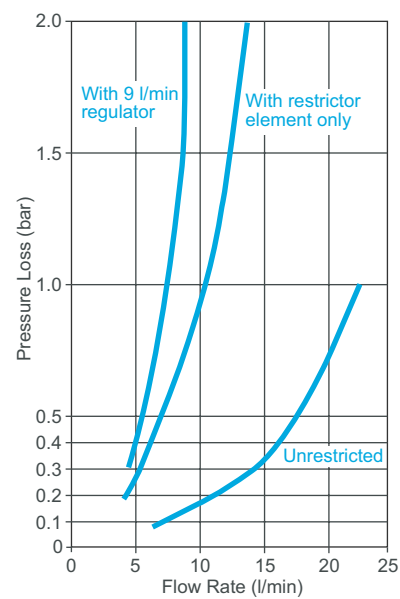
**Specify as: Rada VR145 (1.0.098.79.1)**

Vandal resistant shower fitting for connection to rising surface pipework with fixed spray plate and 9 l/min flow regulator.

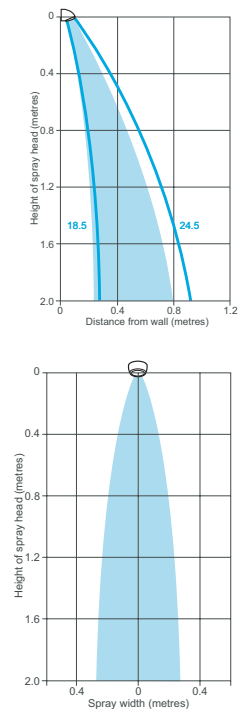
**Dimensions (mm)**



**Pressure Loss/Flow Rate (with VR spray plate)**



**Spray Patterns at 9 l/min**



TECHNICAL SPECIFICATION

**Installation and Maintenance**

Please refer to the appropriate Product Manual.

**Connections**

Push-fit socket to accept 15 mm pipework.

**Approvals**

WRAS Approved (Water Regulations Advisory Scheme)  
 KIWA UK Approved  
 Designed, manufactured and supported in accordance with accredited  
 BS EN ISO 9001:2008 Quality Management Systems and  
 BS EN ISO 14001:2004 Environmental Management Systems.

**Materials**

Spray body: Brass, polished chrome finish.  
 Mounting bush/Inlet nipple: Brass.  
 Spray cartridges: Engineering plastic.  
 Flow regulator: Engineering plastic.  
 Strainer: Stainless steel  
*All screws in contact with water are stainless steel.*

**Temperature Range**

Designed to accept water supplied between 5°C and 65°C.

**Pressure Range**

Recommended minimum maintained pressure at the inlet of the fitting: 0.1 bar.  
 Maximum maintained pressure at the inlet of the fitting: 5.0 bar.

**Spray Performance**

Minimum flow rate necessary to achieve a fully formed spray pattern: 6 litres/min.

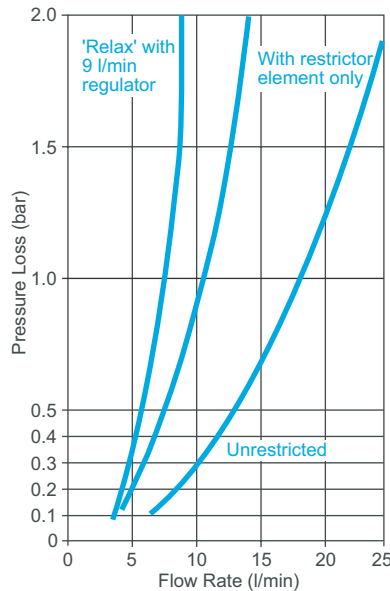
**Accessories**

**300R Adjustable Spray Cartridge (1.0.098.87.1)**  
 With 'Start', 'Active' and 'Relax' modes (chrome finish).

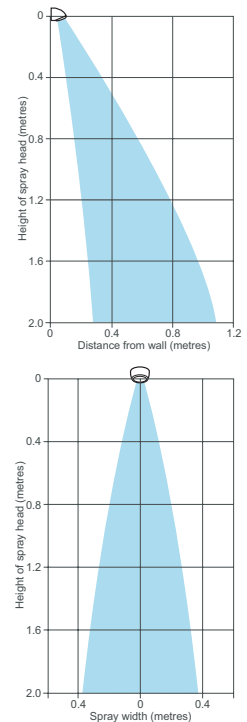
**310R Hard Water Spray Cartridge (1.0.098.88.1)**  
 Self-draining with 'push-clean' action (chrome finish).

**Rada Riser Pipe (5.936.03.1.0)**  
 Stainless steel, 700 mm supply pipe for use with VR125 and VR145.  
**Note!** For 'high risk' applications the 300R, 310R and 400R spray cartridges are not recommended as the cartridges may be removed without the use of tools.

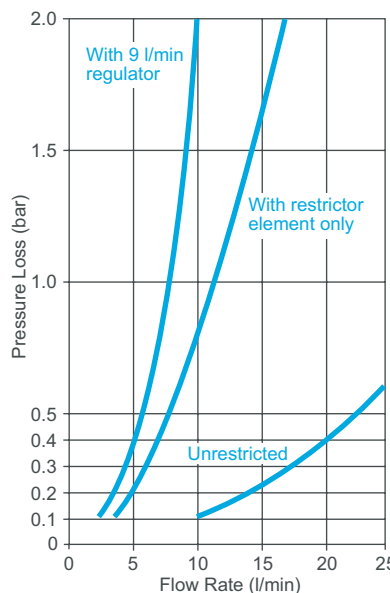
**Pressure Loss/Flow Rate (with 300R spray cartridge)**



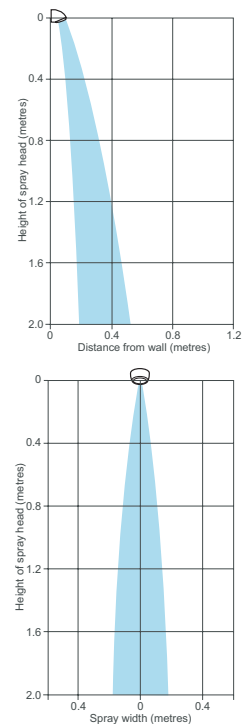
**Spray Patterns at 9 l/min**



**Pressure Loss/Flow Rate (with 310R spray cartridge)**



**Spray Patterns at 9 l/min**



**Kohler Mira Limited**  
 Cromwell Road, Cheltenham  
 Gloucestershire, GL52 5EP

**Specification Enquiries**  
 Tel: 0844 571 1777, Fax: 0844 472 3076  
 Email: rada\_technical@mirashowers.com  
 www.radacontrols.com

Rada is a registered trademark of Kohler Mira Limited.  
 The company reserves the right to alter product specification without notice.  
 © January 2012 Kohler Mira Limited. All rights reserved.  
 No part of this document, or any accompanying document, may be reproduced or transmitted in any form or by any means, including photocopying or electronically, without the permission of Kohler Mira Limited.

A **KOHLER** COMPANY



FM 14648

