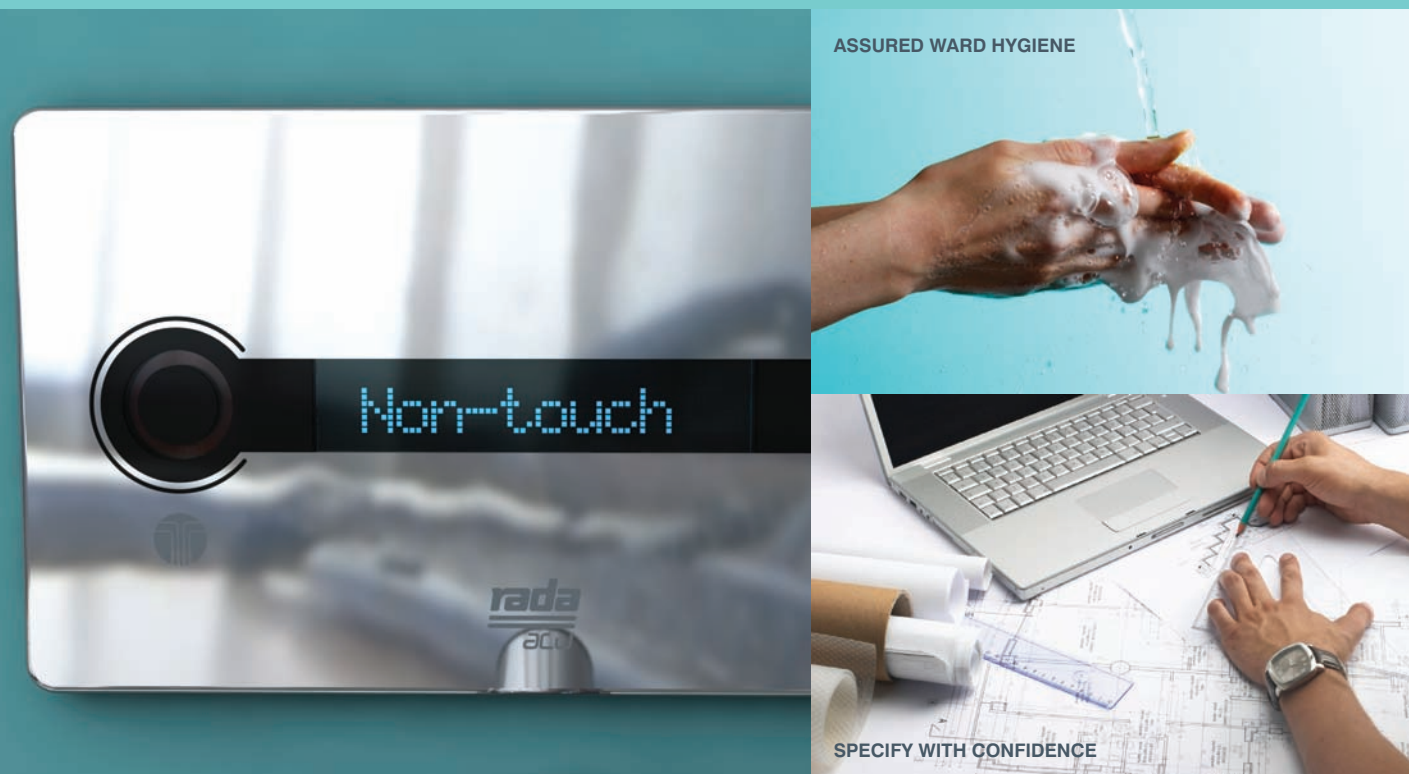


THE VISIBLE SOLUTION



ADVANCED AESTHETIC HAND WASH TECHNOLOGY
FROM THE MARKET LEADERS IN DIGITAL HEALTHCARE
WASHROOM SOLUTIONS

rada
acu

HEALTHCARE

www.radadigital.co.uk



Mira, Rada, Kohler and Meynell are registered trade marks of Kohler Mira Limited. The company reserves the right to alter product specification without notice. © June 2009 Kohler Mira Ltd. All rights reserved. No parts of this document, or any accompanying document, may be reproduced or transmitted in any form or by any means, including photocopying or electronically, without the permission of Kohler Mira Limited.

P6147

THE BOLD LOOK
OF **KOHLER**

mira
SHOWERS

rada

DARYL
A KOHLER COMPANY

rada

Kohler Mira Limited
Cromwell Road
Cheltenham
Gloucestershire
GL52 5EP

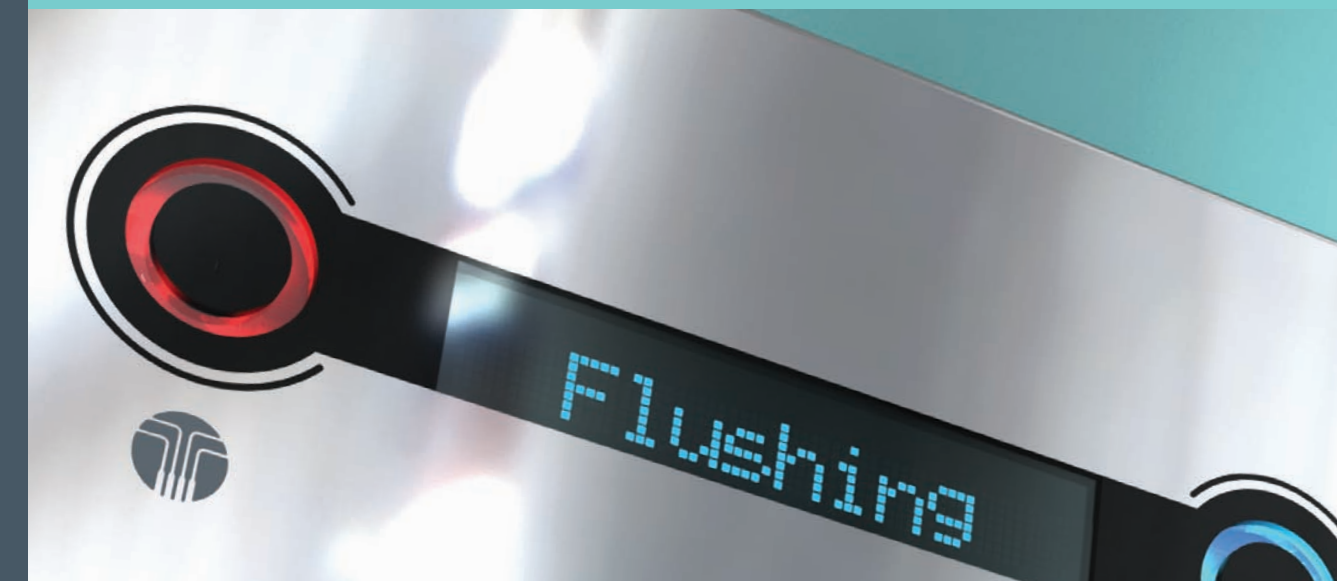
T 01242 282527
F 01242 282404

E rada_technical@mirashowers.com
www.radadigital.co.uk

A **KOHLER** COMPANY

Uniclass L72511:04	EPIC H3
CU/SFB 4	(53.9) (74.29) X
E1-07/09	

RADA ACU DIGITAL HAND WASHING



ADVANCED TECHNOLOGY / INNOVATIVE DESIGN



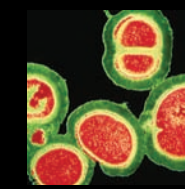
THE EXPERTS IN SHOWER AND WASHROOM CONTROLS

rada

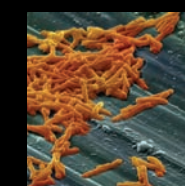
THE HIDDEN PROBLEM

With an estimated 1.4 million cases of Hospital Acquired Infection (HAI) at any time, the need for hand hygiene has never been greater, especially with the bacterial microbes that help HAIs to spread able to survive for hours on unclean hands.

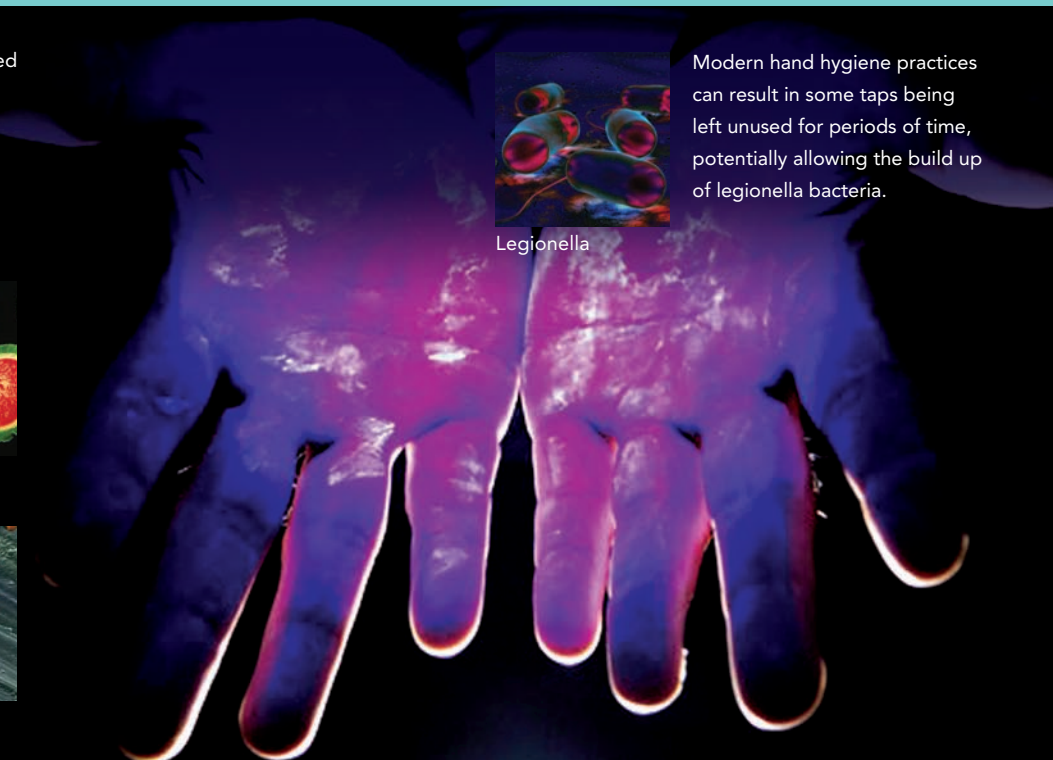
- Vancomycin-resistant enterococcus (VRE)
- Staphylococcus aureus (including MRSA)
- Streptococcus pyogenes (Group A Strep)
- Klebsiella
- Enterobacter
- Pseudomonas
- Clostridium difficile
- Candida
- Rotavirus
- Adenovirus
- Hepatitis A virus
- Norovirus



MRSA



Cdiff



Modern hand hygiene practices can result in some taps being left unused for periods of time, potentially allowing the build up of legionella bacteria.

SPECIFY WITH CONFIDENCE THE NEXT GENERATION OF
T-LOGIC DIGITALLY INTELLIGENT MIXING VALVES FOR WASHBASINS



Stopping the spread of
infection through
Digital Intelligence

Whether you are involved in specifying, designing, infection control or maintenance there are a plethora of healthcare legislation and guidelines that relate to the control and supply of water within healthcare establishments. Although water plays a vitally important role in the fight against infection it can also present considerable risks to vulnerable users if not managed effectively. One way to play your part in that fight and still meet current requirements for hand washing is to specify the latest intelligent digital mixing valve - Rada Acu.

Advanced Technology with
Aesthetic Design

Primary care trusts are tying together health and social care to bring a more holistic approach to well-being.

The NHS is striving to create an innovative safe environment with transformational change moving away from the old, institutional establishments. Rada Acu with its intelligent T-logic™ provides both aesthetic design with advanced digital technology.

Advanced Features -
Intelligent Control

At Rada, our understanding and in-depth experience of the commercial washroom sector lies at the heart of everything we do. So when we say that Rada Acu is the world's first digital mixing valve designed specifically for healthcare applications you can be sure it's no idle boast. Rada Acu represents the next generation of digital mixing valves offering many advanced features and uses Rada's unique T-logic™ digital intelligence to control every aspect of its operation. By managing water flow and temperature with unparalleled accuracy T-logic™.

allows the user to operate, communicate and exchange information with the digital mixing valve to deliver the ultimate in safety, hygiene and control. Rada Acu is built around features which support infection control measures.

Key Features

- Non-touch water flow and temperature adjustment
- Smooth surface/easy to clean
- Duty flush/thermal disinfection
- Ultimate in safety from digital control
- Fully programmable
- Temperature logging programme to aid DOB compliance
- Can be tailored to each application

NON-TOUCH CONTROL SAFETY HYGIENE DISINFECTION DUTY FLUSH DIGITAL LOGIC PROGRAMMING DATA LOGGING BEYOND COMPLIANCE T-LOGIC NETWORK ENABLED

Easy to clean

Access to programming

Blue sensor operates with a range of 60mm, provides full cold in patient mode or reduces the temperature of the water supplied, also used to scroll through options when programming

Red Sensor operates with a range of 60mm to control temperature or select options when programming

Spout Activated

LCD display provides feedback to users on temperature. Used during programming to display options, valve information and fault diagnosis

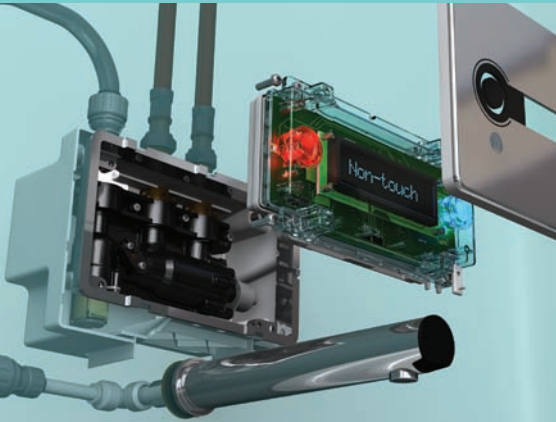


Rada Acu Ultimate Flexibility

A secure magnetic programming key allows authorised users access to Rada Acu's operating parameters. This gives them ultimate flexibility in setting up Rada Acu for such functions as Duty Flushing and Thermal Disinfection. They can even override the three preset modes and also access temperature logging information which aids DOB commissioning and testing.

Easy Maintenance

To access the valve for servicing simply remove the cover and PCB, isolate supplies and all without needing to remove the panel. Components are easy to replace and filters can be removed, cleaned and replaced in less than 5 minutes.



Rada Acu Preset Modes:

Rada Acu offers three carefully designed preset modes - clinical, surgical and patient - designed for use by doctors and nurses, theatre staff, and patients respectively.



Clinical Mode

Rada Acu displays a 'Non-touch' read-out and is activated via the sensor in the spout. The water flow stops automatically when the user removes their hands, and the default temperature is a reliable 41°C, with no temperature adjustment allowed.



Surgical Mode

Rada Acu again displays a 'Non-touch' screen, and activation is via the spout sensor. The default temperature is 41°C but this can be altered in 2°C increments by the user. Once the water reaches the set temperature a 3-minute count-down timer starts, indicating how long is left before Rada Acu automatically stops the water flow. For user convenience the unit will then reactivate at the pre-selected temperature for 30 seconds.



Patient Mode

Flow is triggered by the user placing their hands under the spout. This also activates the hot and cold sensors to allow temperature adjustment and direct access to full cold. Removal of hands deactivates the flow, but for convenience if temperatures have been adjusted the product will reactivate at the pre-selected temperature for 30 seconds.

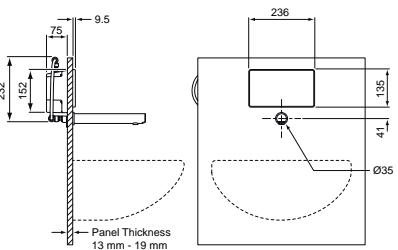
Beyond compliance

HTM64
HTM 07-04
HBN 57
HBN 26



RADA ACU

Dimensions (mm)



Panel and basin not supplied
External dimensions - not installation dimensions

PRODUCT INFORMATION

PRODUCT CODE

RADA ACU T3 190mm spout 1.1664.001
RADA ACU T3 225mm spout 1.1664.002

USAGE

HTM64 TB H6 Basin assemblies for use in connection with clinical procedures. Use as an alternative to TP6 in conjunction with personal washing or hand washing. Spouts available in two lengths 190mm and 225mm

WEB LINK

www.radadigital.co.uk/acu