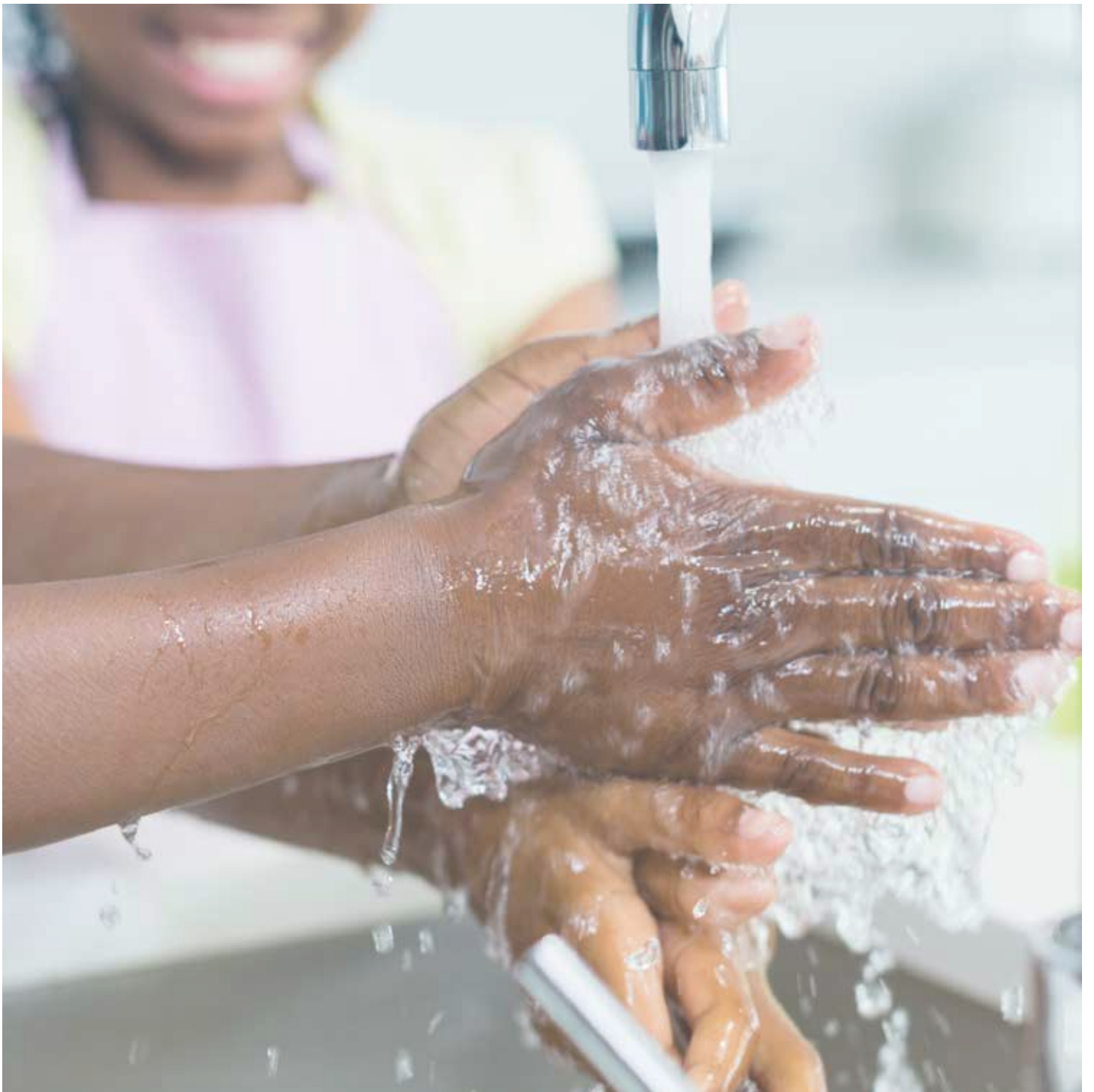
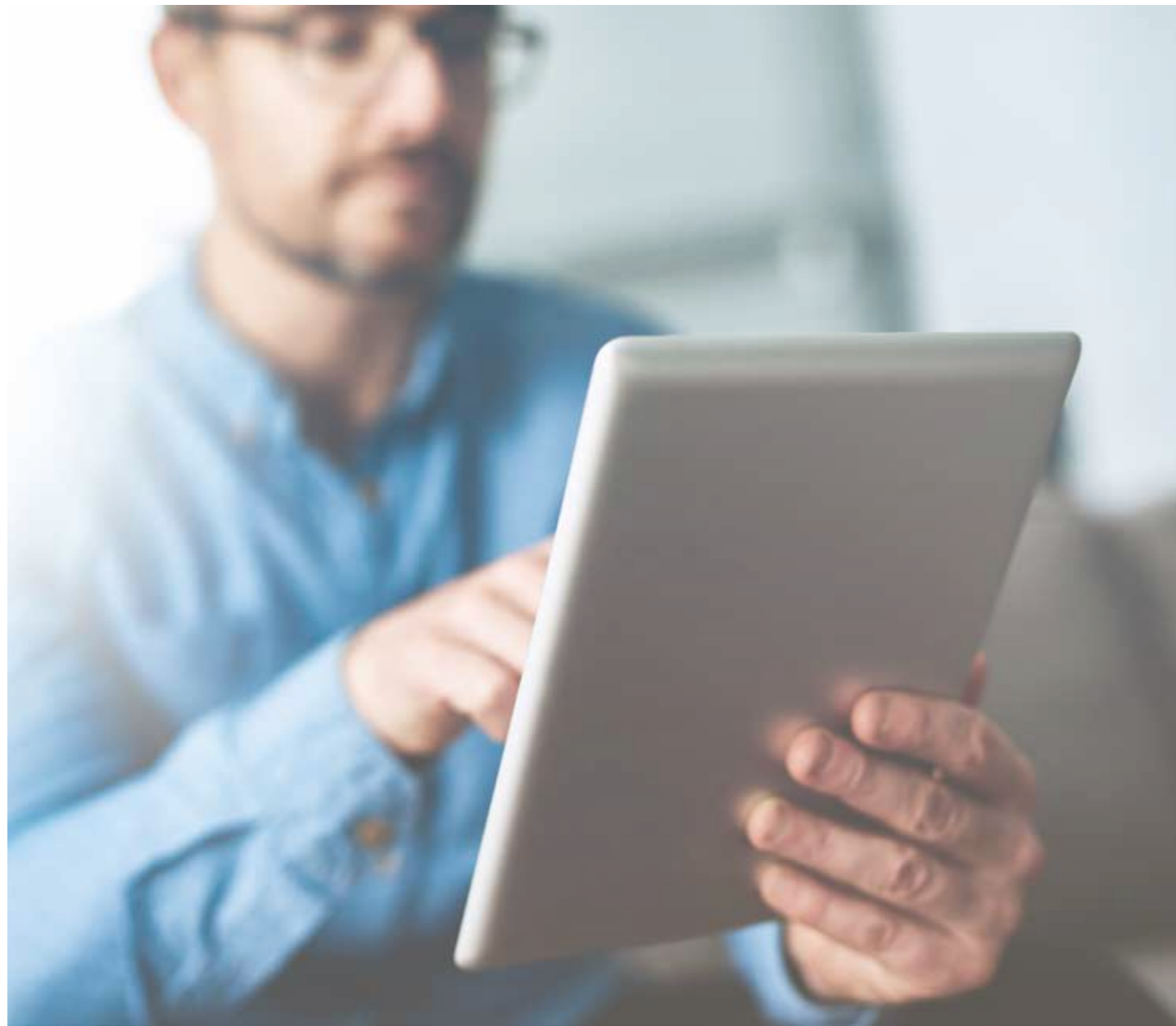


WATER CONTROLS IN A CONNECTED WORLD





HARNESSING NEW TECHNOLOGY

The digital revolution enables us to make technological advancements in almost every aspect of our daily lives – saving us time and money.

Through the growth of the 'Internet of Things' we are increasingly able to harness the benefits from networked, connected and intelligent products and systems such as smart devices that regulate heating in our homes to devices that monitor our health and manage our appointments.

[“The ability to be networked and connected to our environment and the wider world has become a cornerstone of advancement.”](#)

MODERN WATER MANAGEMENT

One of the most significant advancements in water systems concerns connectivity and the ability to network multiple outlets and data points.

Traditionally seen as more passive tools, modern taps and showers now play an active and intelligent role in preventing waterborne infection, helping to deliver safe water at the point of use and conserving natural resources.





FULLY NETWORKED

The ability to network multiple outlets and data points is an exciting prospect and is providing new ways of increasing efficiency, ensuring compliance and reducing running costs.

“Maintaining a safe and compliant water system is understandably a complex and constant challenge. The opportunity to better utilise technology to provide a much more effective and efficient way of water management has never been greater.”

TEMPERATURES, flow times and essential control and hygiene measures can be set, managed, remotely logged and monitored. Time and money is saved by fully automating previously labour intensive disciplines.



PROVING ACCURATE COMPLIANCE with health guidelines and legislation is maintained and accurate. Record keeping and logging of important control measures i.e. duty flushing is automatic, completely removing the need for the process to be undertaken manually.



THE ABILITY TO INTEGRATE the water management system onto a wider cloud based architecture enables active monitoring from any location.



RADA MONITORING SERVICE can be integrated with your existing Building Management System (BMS) either via an existing network or via secure cloud based API solutions to offer the complete building technology solution. This enables all water controls technology in the building to be monitored, managed and controlled from a central dashboard increasing operational efficiencies.



DATA CAN BE STORED and downloaded to be reviewed, interrogated and turned into actionable intelligence. Reviewing this data and adjusting best practice to enable the best possible outcomes enables a more sustainable water management programme and healthier living building.



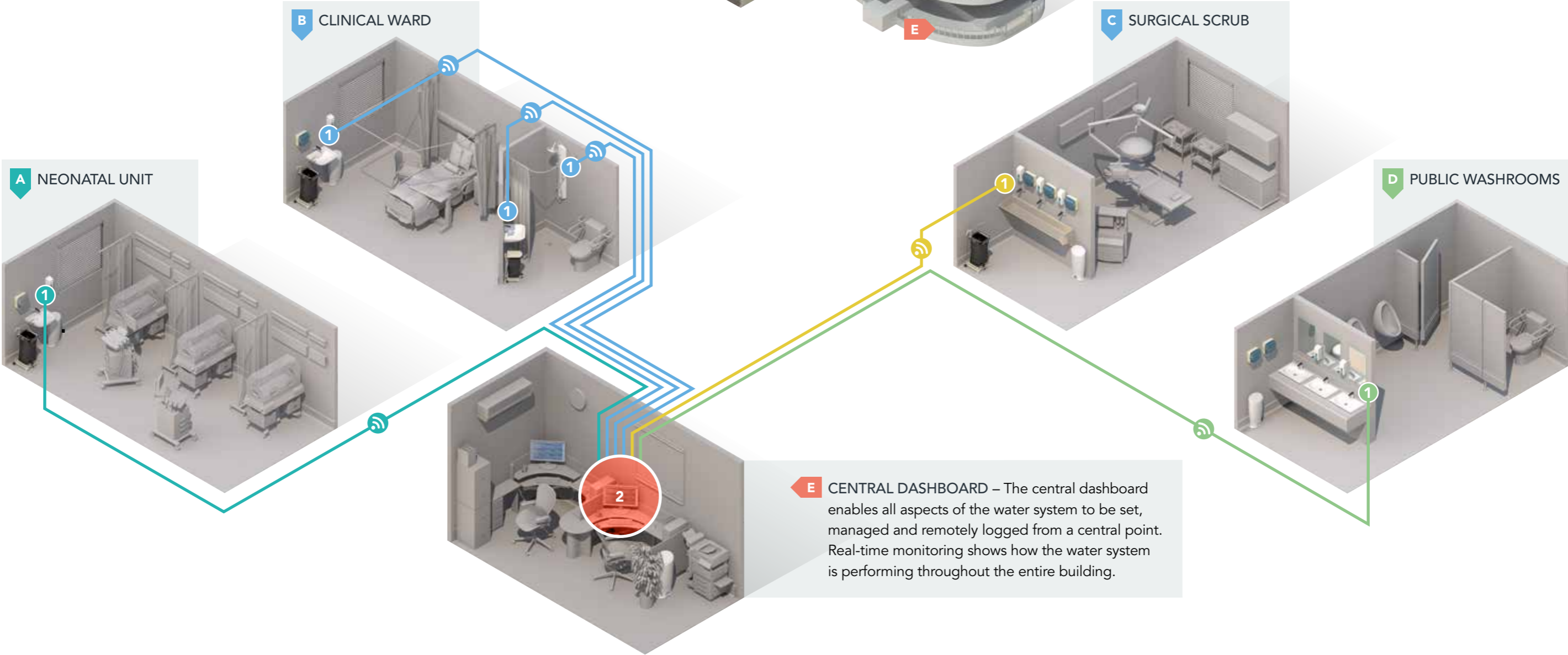
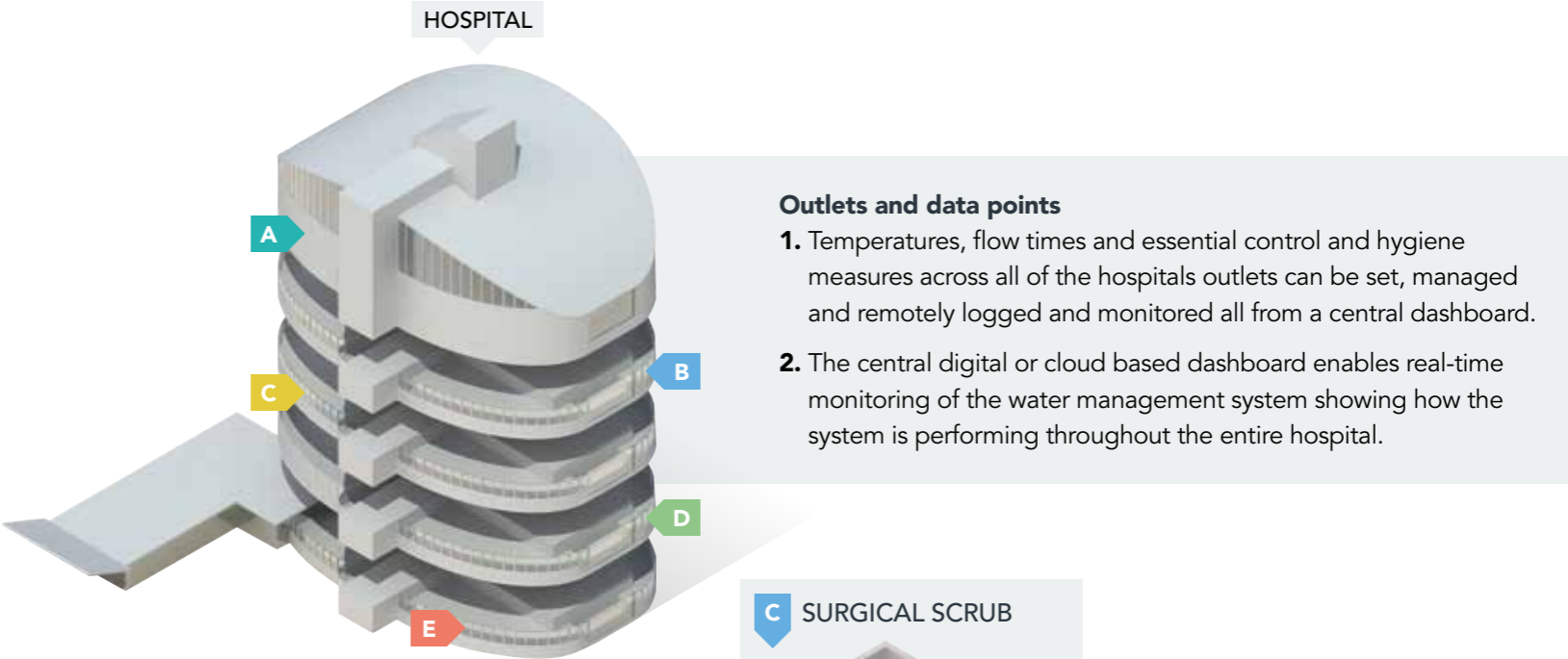
AUTOMATED NETWORKING enables real-time monitoring of the water management system showing how the system is performing throughout the entire building and alert the right person when exceptions occur.



NETWORK DIAGRAM

This building graphic illustrates how a networked 'generic' hospital supports an effective water management regime.

The hospital's water system is integrated onto the network enabling active monitoring.



THE RADA WAY

Rada has been at the forefront of designing and manufacturing water controls and washroom products across a range of sectors for the commercial buildings market for more than 80 years. It believes people should use taps, showers and water outlets designed to keep users safe, prevent waterborne infections and conserve resources.

It's uncompromising in its approach to reimagining the way its products are designed, made, installed and serviced.

Rada – A Kohler Company

Kohler brings together a number of market leading bathroom and shower brands including Rada, Kohler UK and Mira Showers. If you'd like to know more, please visit www.kohlermira.co.uk

Rada – A Kohler Company

T +44 (0) 344 571 1777

T +44 (0) 1242 282527

E rada_technical@mirashowers.com

www.radacontrols.com



A **KOHLER** COMPANY