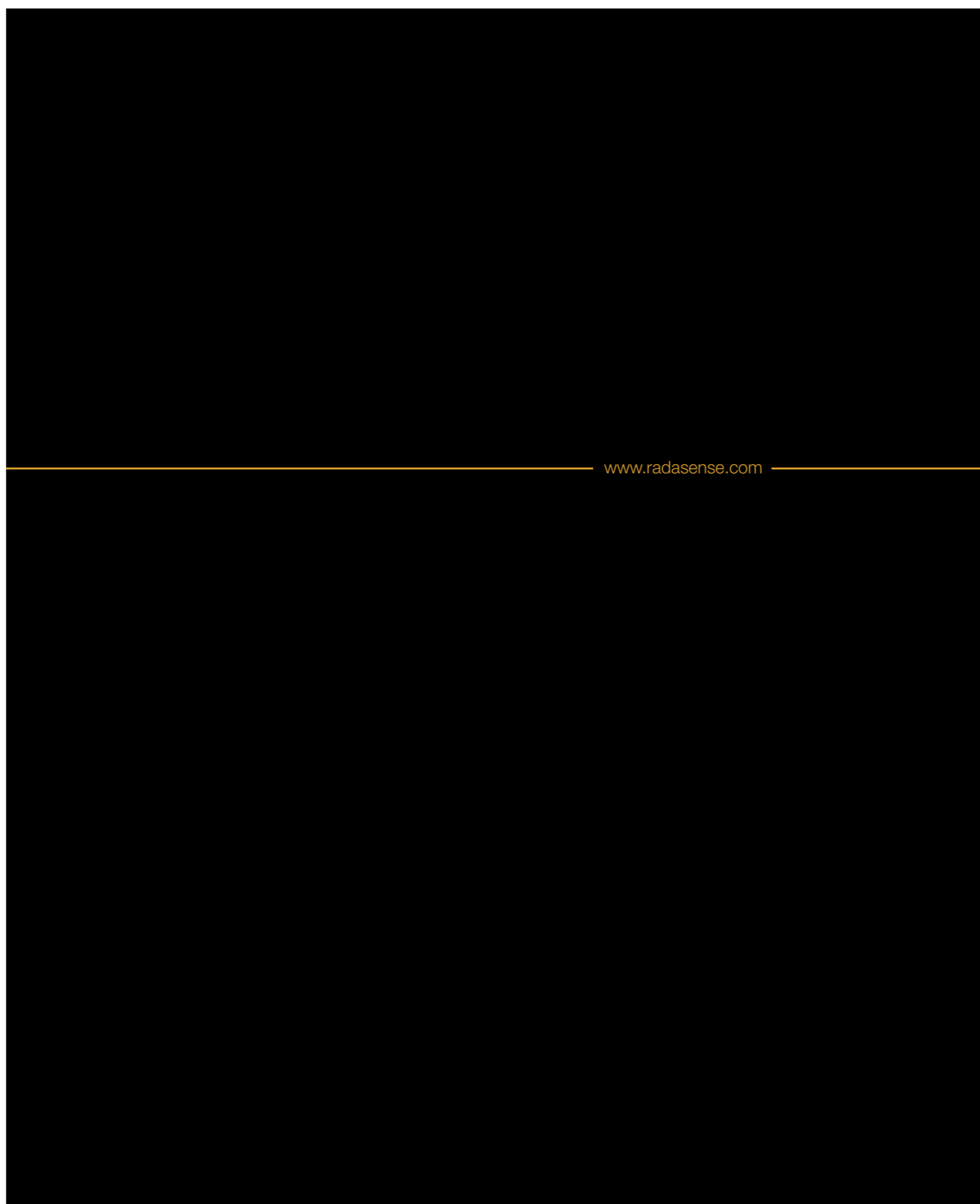




www.radasense.com

LUSH DIGITAL T-LOGIC PROGRAMMING DATA LOGGING CALIBRATION REPORT NO-TOUCH CONTROL



www.radasense.com

Rada is a registered trade mark of Kohler Mira Limited. The company reserves the right to alter product specifications without notice. © May 2006 Kohler Mira Limited. All rights reserved. No part of this document, or any accompanying document, may be reproduced or transmitted in any form or by any means, including photocopying or electronically, without the permission of Kohler Mira Limited.



The Shower and Washroom Experts.

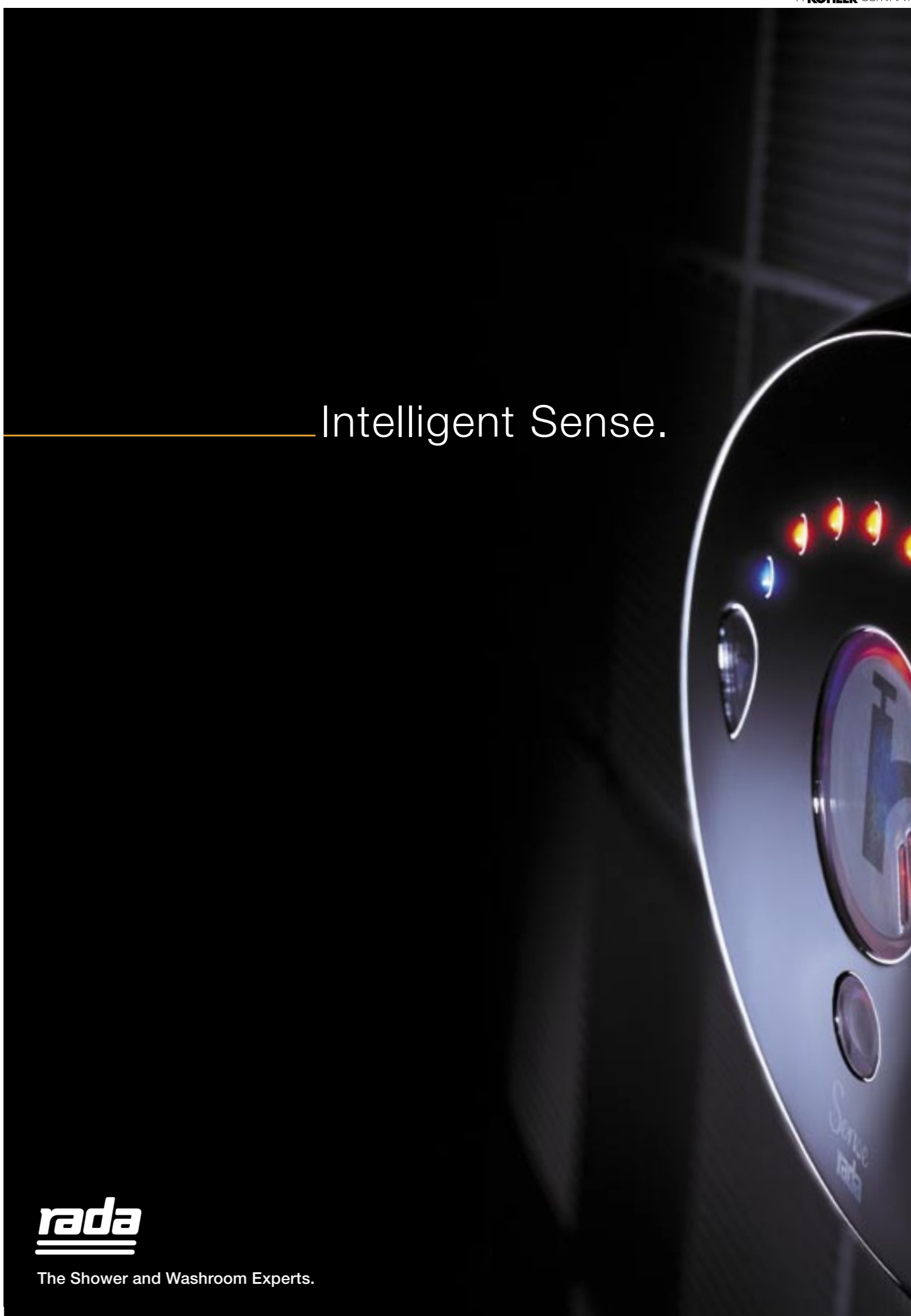
Kohler Mira Limited
Cromwell Road Cheltenham
Gloucestershire GL52 5EP

Telephone 01242 282527
Facsimile 01242 282404

P5638



The Shower and Washroom Experts.



Intelligent Sense.

Beautiful outside, intelligent inside.

This is Rada Sense, a revolution in washroom control.

At first sight it looks stunning with its sleek no-touch control panel and clear illuminated display.

But the really clever thing is the bit you can't see.

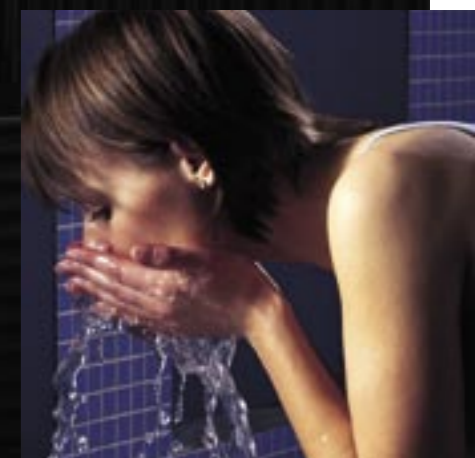
Hidden away is the world's first digital mixing valve specially designed for commercial use.

Featuring our unique T-logic™ intelligence, it not only controls temperature and water flow timing with unprecedented accuracy, but can also be set to perform regular duty flushing or thermal disinfection and to provide essential information, all accessible using a standard hand-held computer.

Used to supply basins, showers or baths in single and multiple installations, Sense is already proving it has major benefits in hygiene, usability and lifetime costs.

It not only looks good.

It makes perfect sense.



www.radasense.com

NO-TOUCH CONTROL SAFETY HYGIENE DISINFECTION DUTY FLUSH DIGITAL T-LOGIC PROGRAMMING DATA LOGGING CALIBRATION REPORT NO-TOUCH CONTROL SAFETY HYGIENE DISINFECTION DUTY

Safety and hygiene first.

Some of the key benefits Rada Sense gives you are its protection of vulnerable users, and its contribution to hygiene and infection control.

Its digital mixing valve meets the stringent requirements of TMV2, TMV3, IEC 61508 and is highly accurate.

So although the user controls on/off and temperature, precise temperatures and flow times can be pre-set using a remote hand-held computer and are maintained even if there are water pressure or temperature fluctuations.

This allows water to be stored at a high temperature to kill legionella and other infections but still be delivered safely.

Another of its many advantages in infection control is the ability to provide regular duty flushing or high temperature thermal disinfection.

Add the fact that Sense's no-touch control panel helps reduce simple hand to hand bug transmission and it's easy to see why Sense has become the choice for healthcare settings like the Birmingham Children's Hospital or in the X-Ray unit at the Royal United Hospital, Bath.

In today's infection-aware environment, it clearly makes sense.



All under control.

Our T-logic™ intelligence gives the end user the ultimate in control.

But it also makes sense for those who design, operate and maintain facilities too.

It helps meet all the expectations and regulatory needs of today's buildings, from user satisfaction to hygiene and safety, from water and energy saving to affordable lifetime costs.

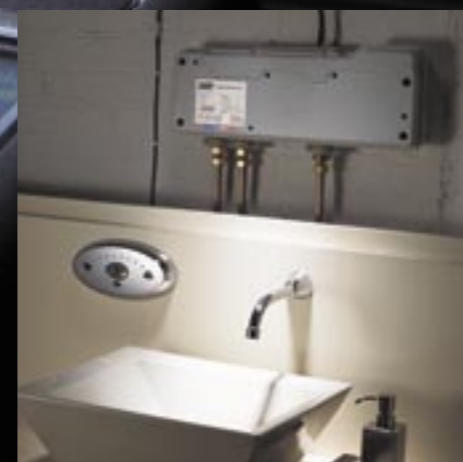
It can even tell how it's performing, with internal fault diagnosis, data collection and reporting, allowing the system to be constantly monitored.

Its digital heart is intrinsically reliable and, as usual with Rada, it has already undergone years of careful development and testing.

Now it's proving itself in a variety of real-life applications from the changing rooms at Cardiff's Millennium Stadium to the newly refurbished Liver Building in Liverpool.

It's where Rada's experience and expertise in commercial washrooms meets the digital age.

That's intelligent sense.



To find out all about Rada Sense, how it works, its technical specification and installation details, visit the website or call 01242 282527

www.radasense.com

www.radasense.com